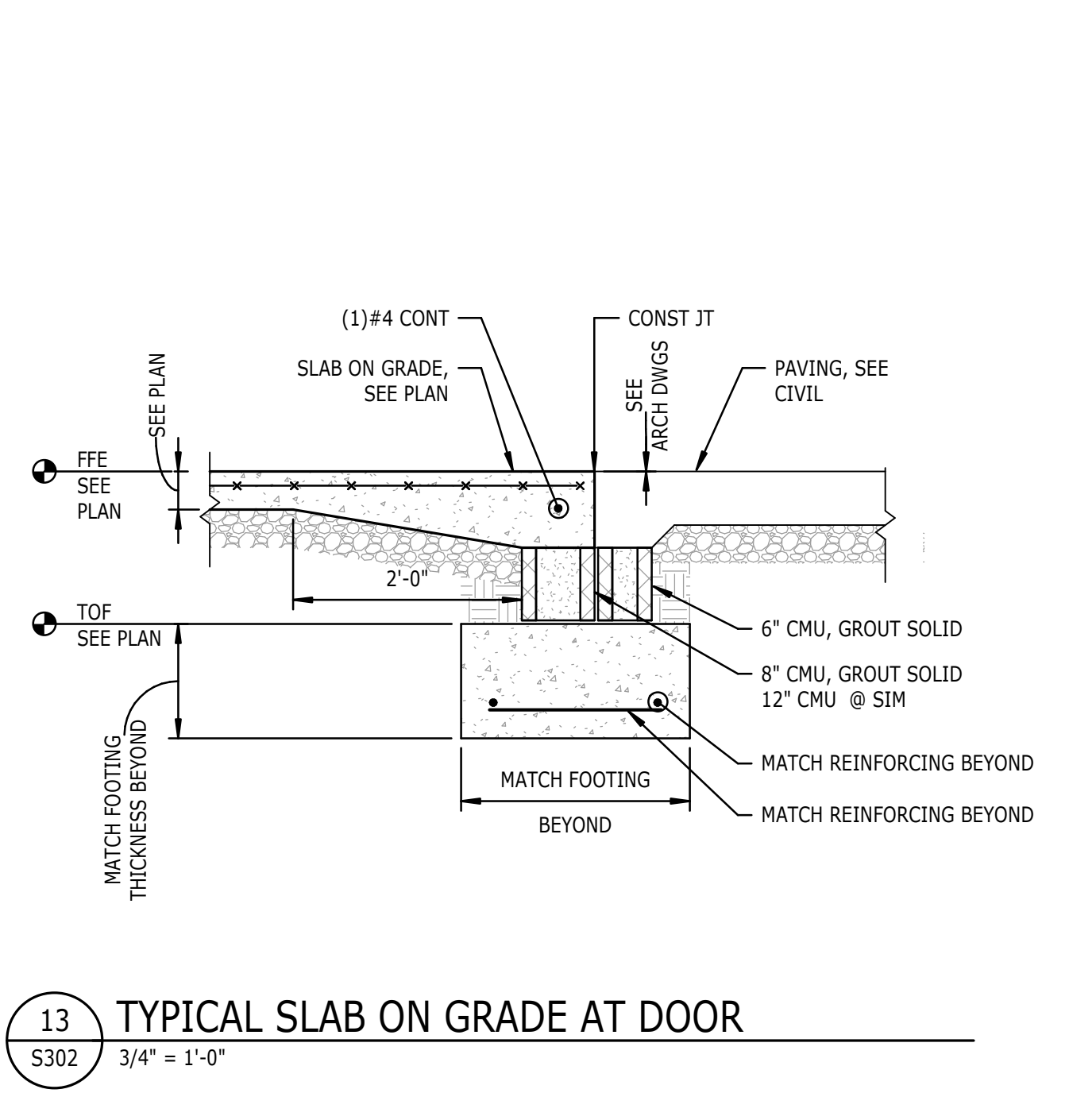
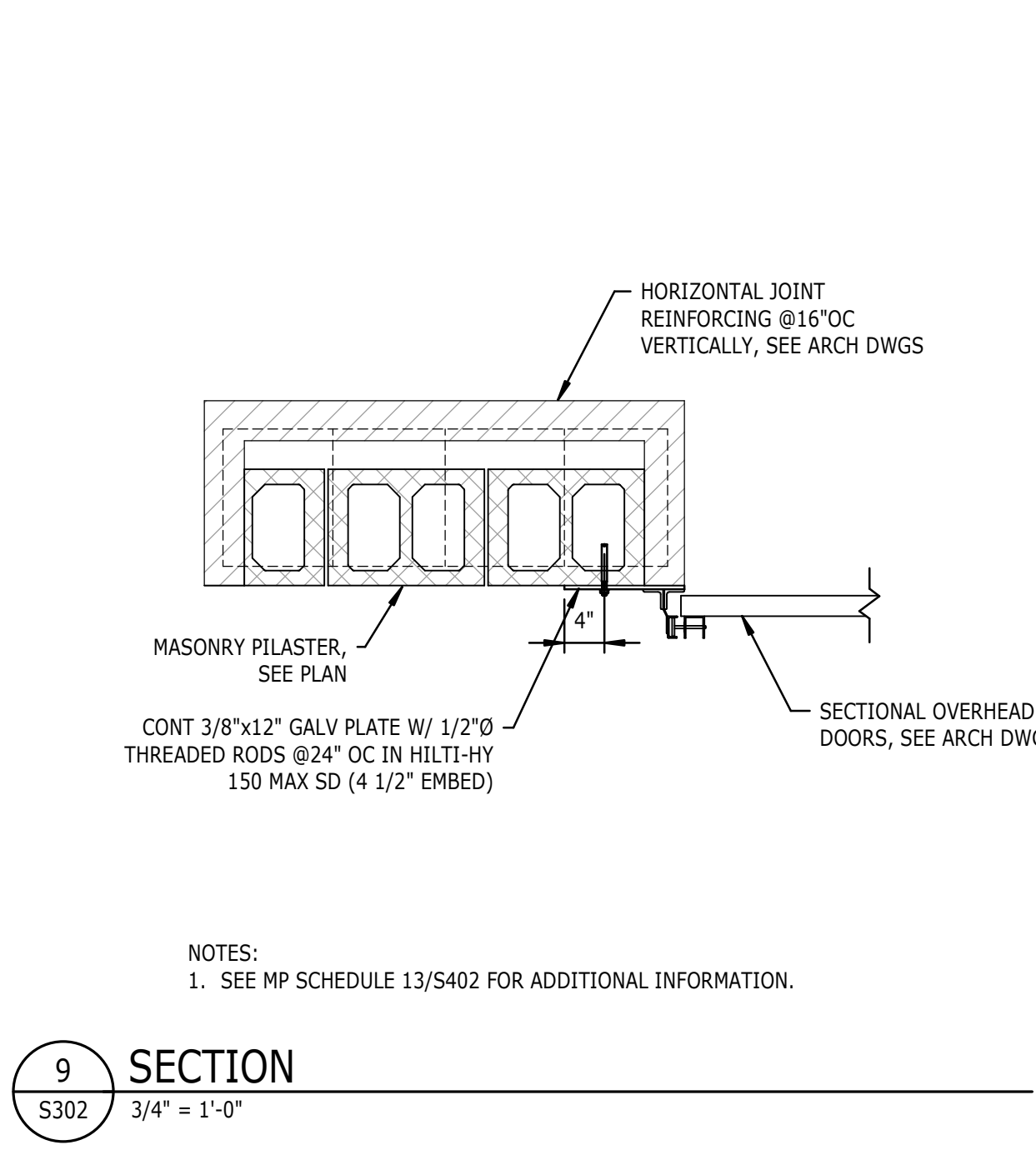


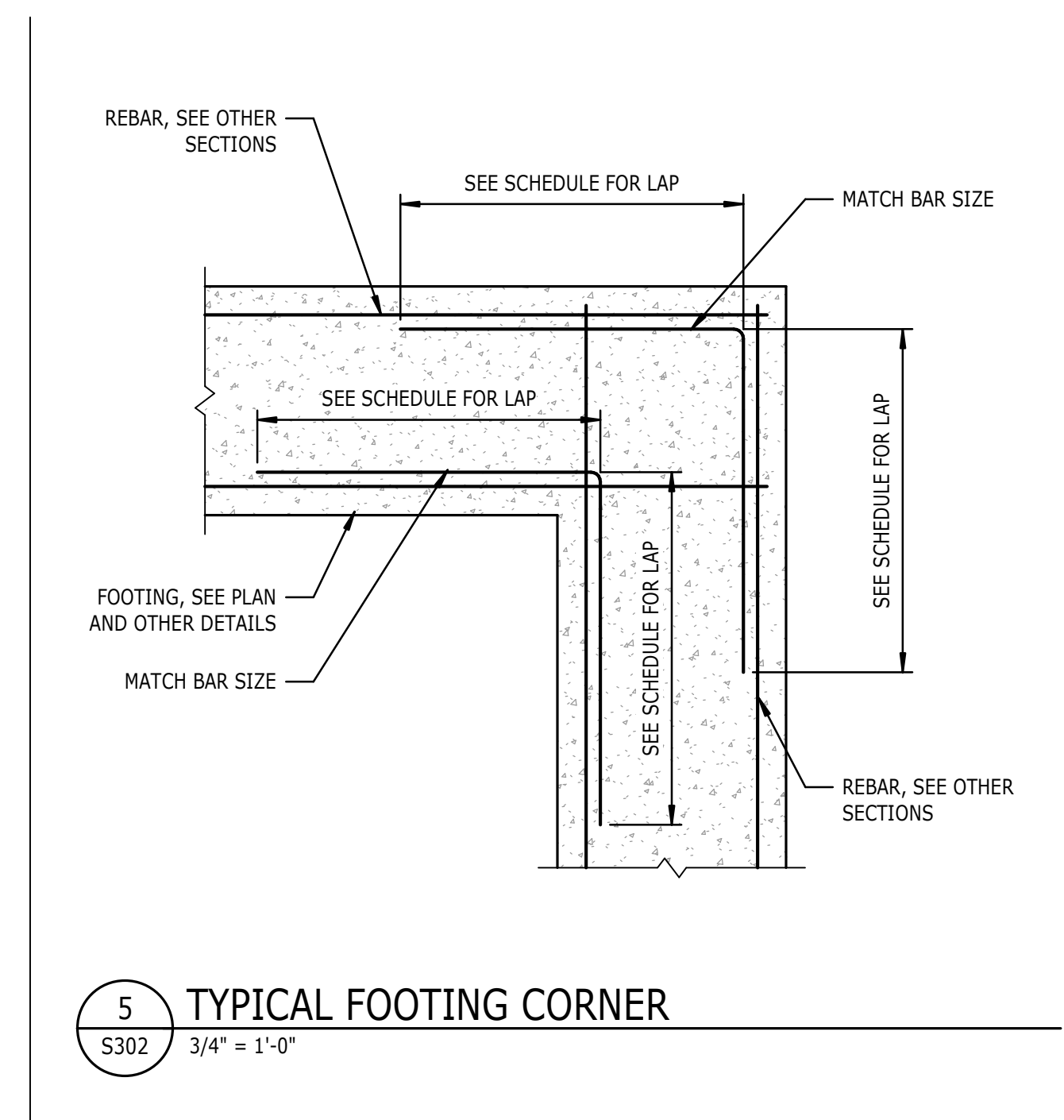
17 SECTION
S302 3/4" = 1'-0"



13 TYPICAL SLAB ON GRADE AT DOOR
S302 3/4" = 1'-0"



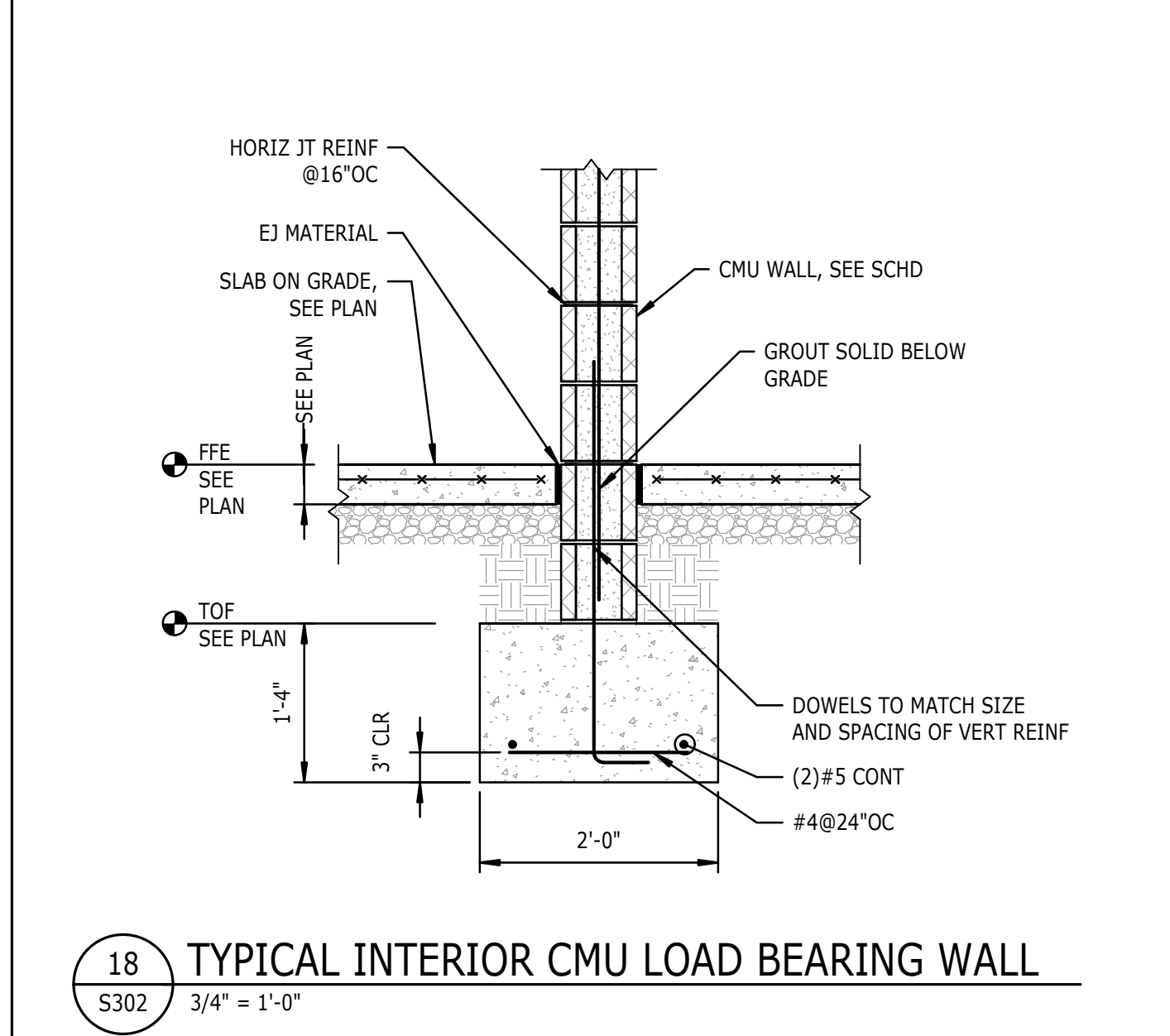
9 SECTION
S302 3/4" = 1'-0"



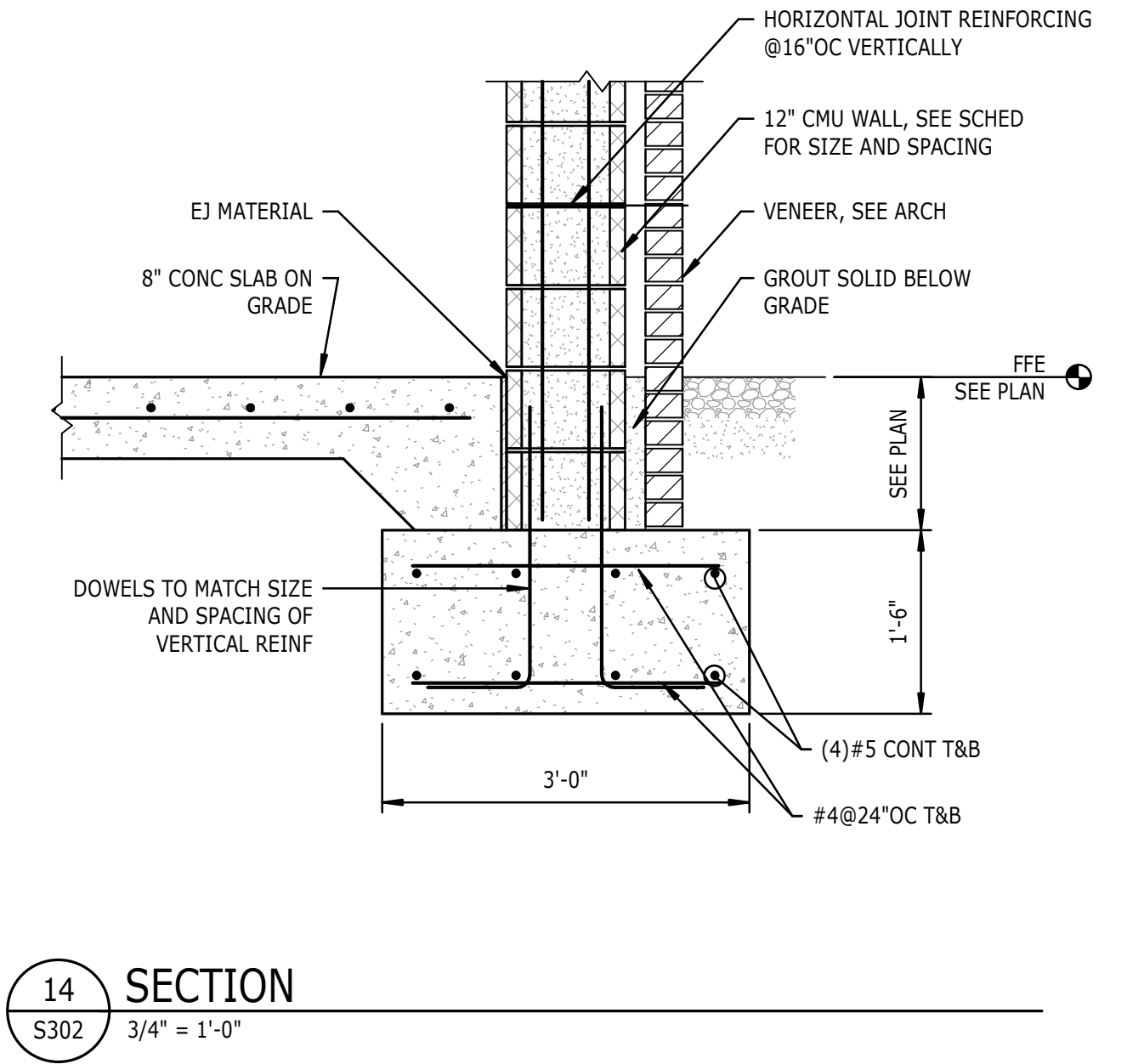
5 TYPICAL FOOTING CORNER
S302 3/4" = 1'-0"

FOOTING SCHEDULE						
MARK	SIZE			REINFORCEMENT (EACH WAY)		
	WIDTH	LENGTH	DEPTH	TOP	BOTTOM	
F4	4'-0"	4'-0"	1'-6"	NA	(4)#5	
F5	5'-0"	5'-0"	1'-0"	NA	(6)#5	
F6-1	6'-0"	6'-0"	1'-0"	NA	(7)#6	
F6-1.5	6'-0"	6'-0"	1'-6"	NA	(7)#6	
F6B	6'-0"	6'-0"	1'-6"	(7)#6 EA WAY	(7)#6 EA WAY	
F7	7'-0"	7'-0"	1'-3"	NA	(8)#5	
F8	8'-0"	8'-0"	1'-6"	NA	(9)#7	
F9	9'-0"	9'-0"	1'-6"	NA	(10)#7	

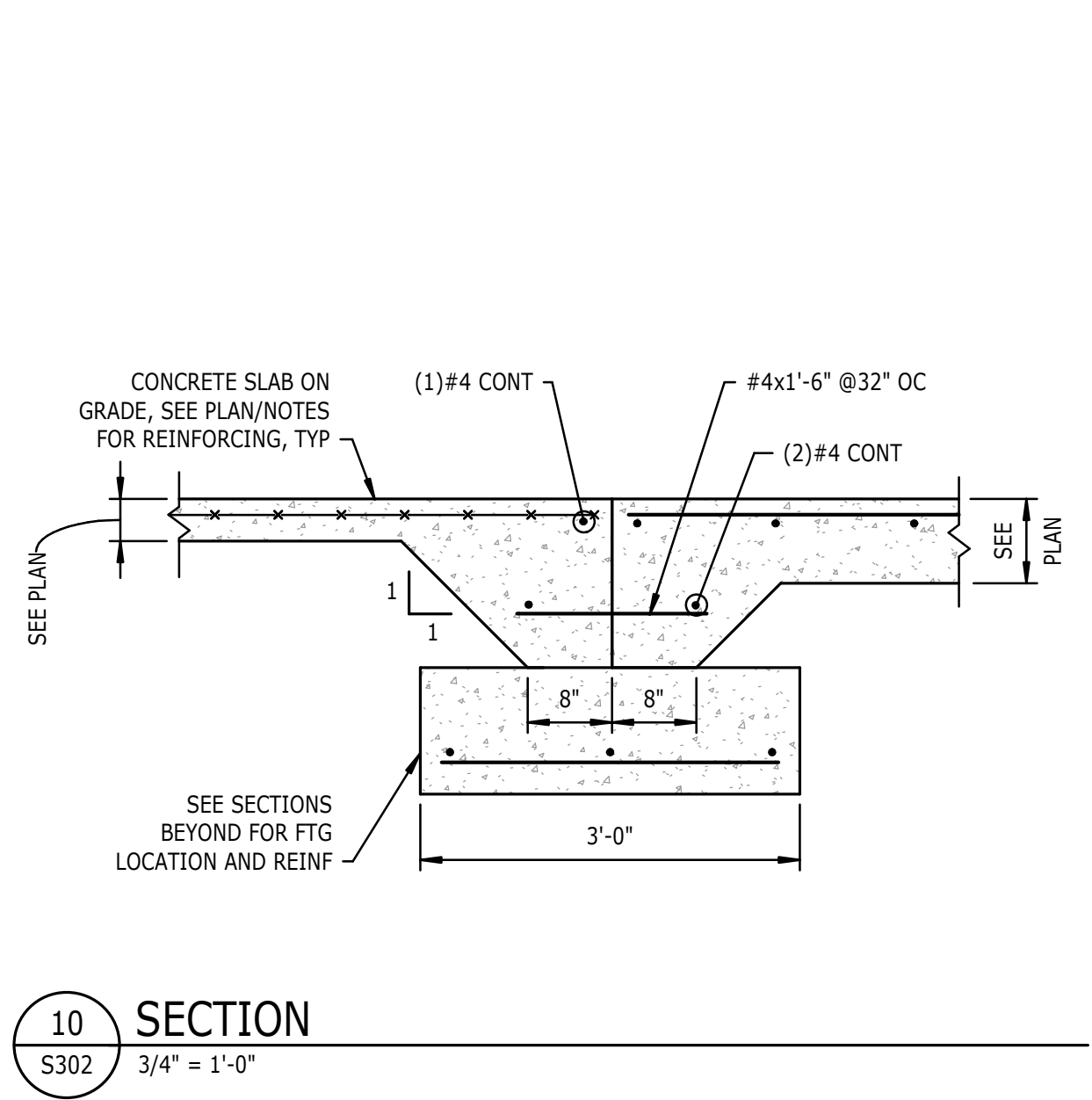
NOTES:
1. -
1. SPREAD FOOTING SCHEDULE
S302 3/4" = 1'-0"



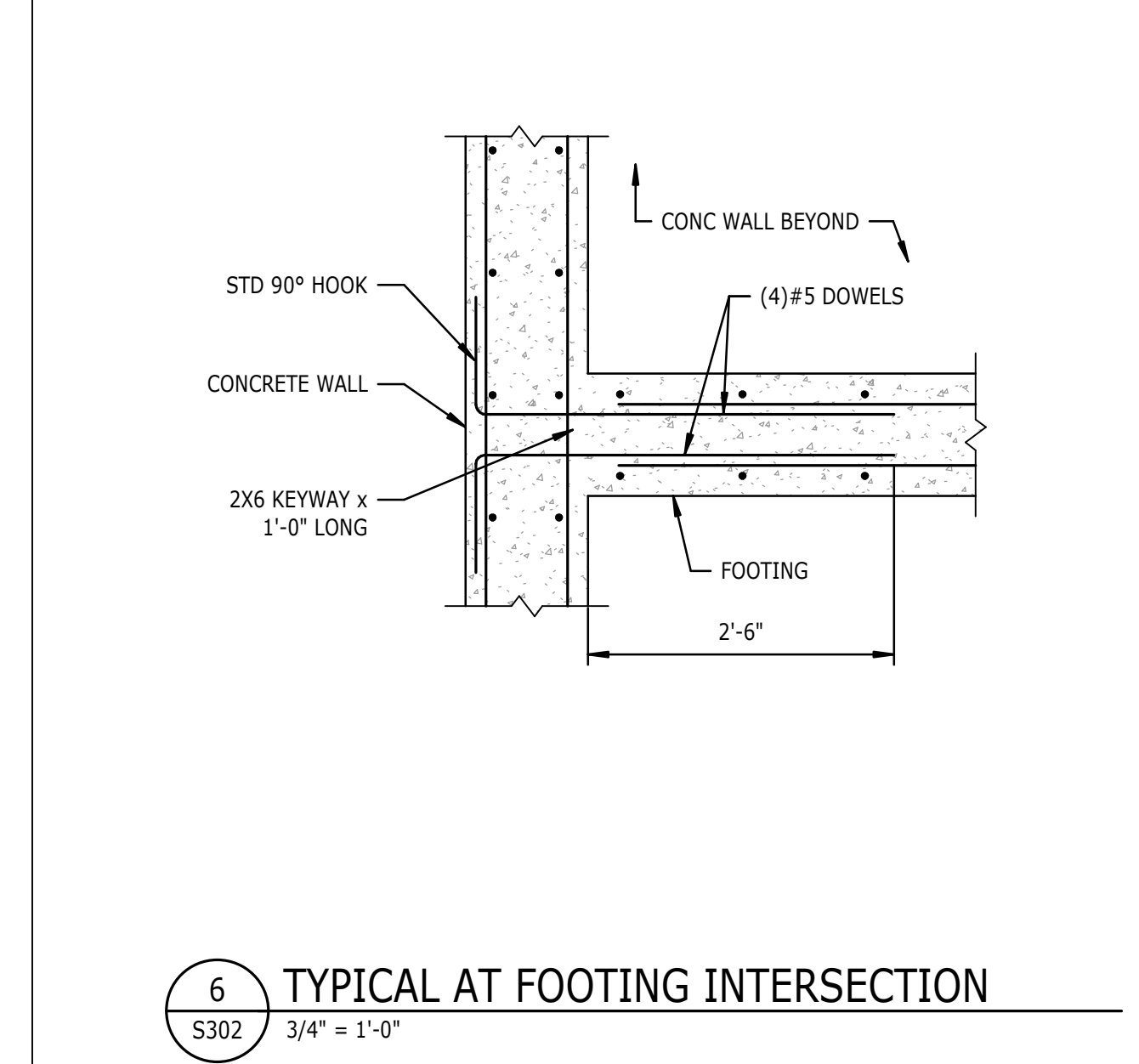
18 TYPICAL INTERIOR CMU LOAD BEARING WALL
S302 3/4" = 1'-0"



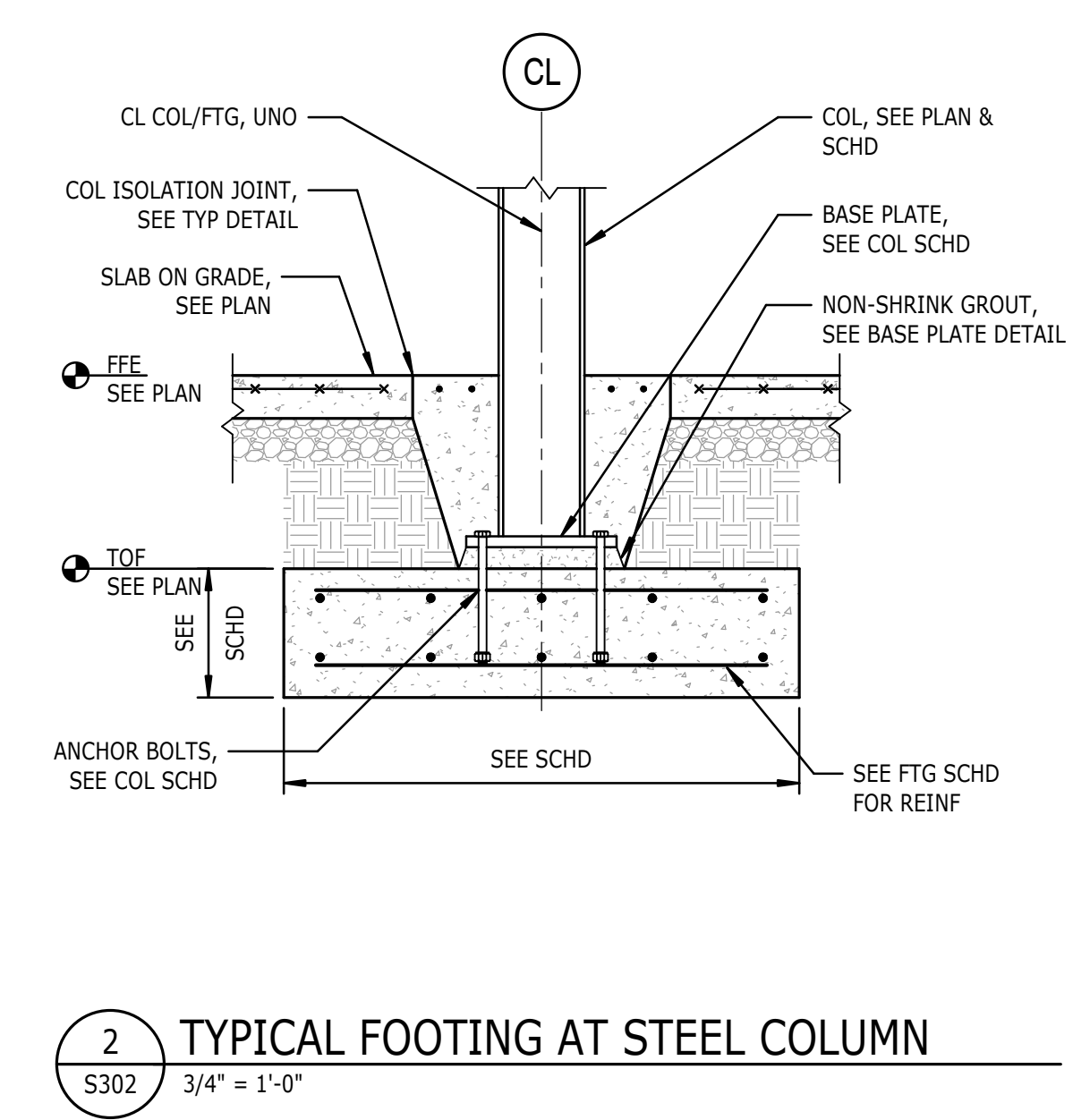
14 SECTION
S302 3/4" = 1'-0"



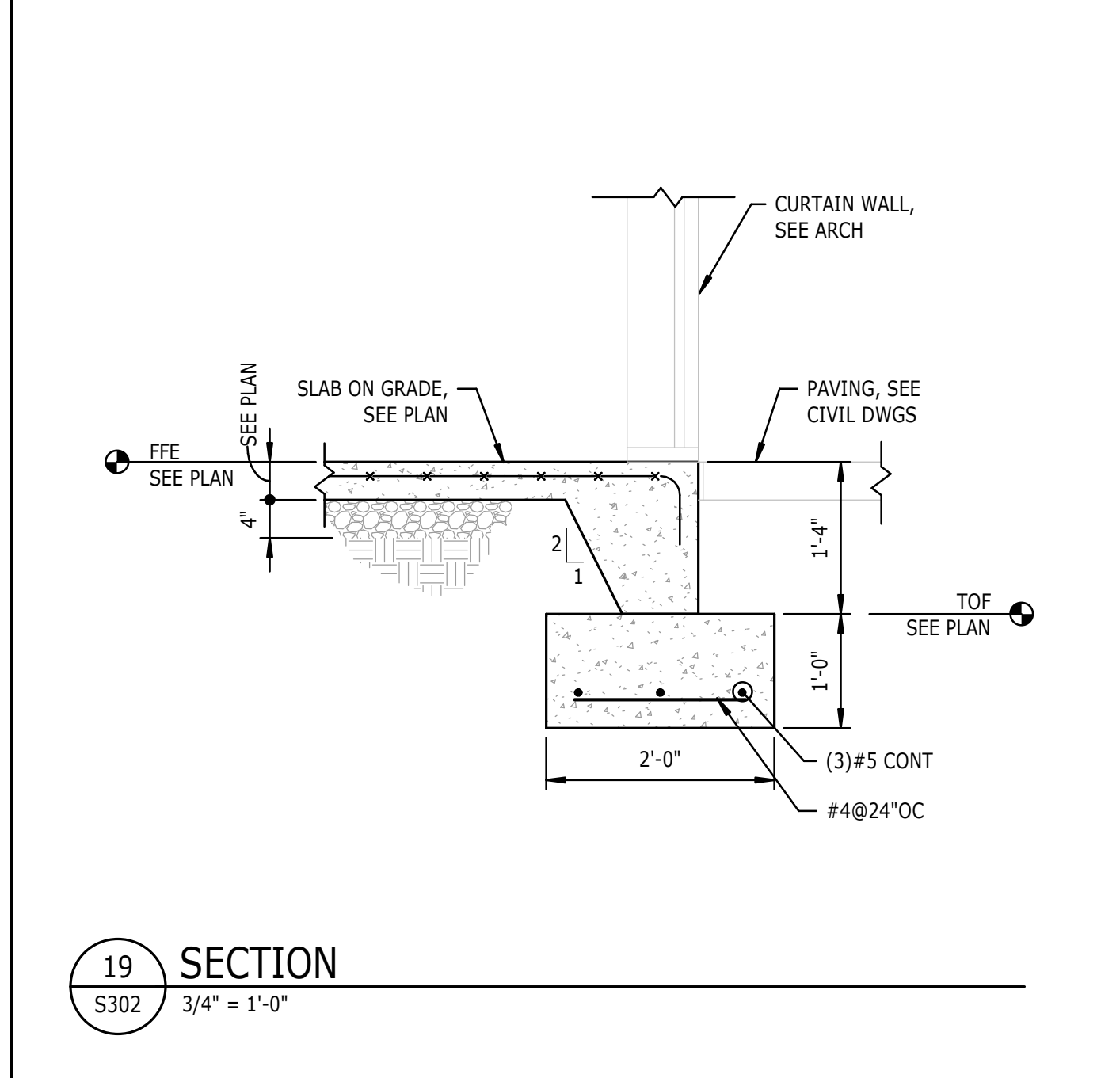
10 SECTION
S302 3/4" = 1'-0"



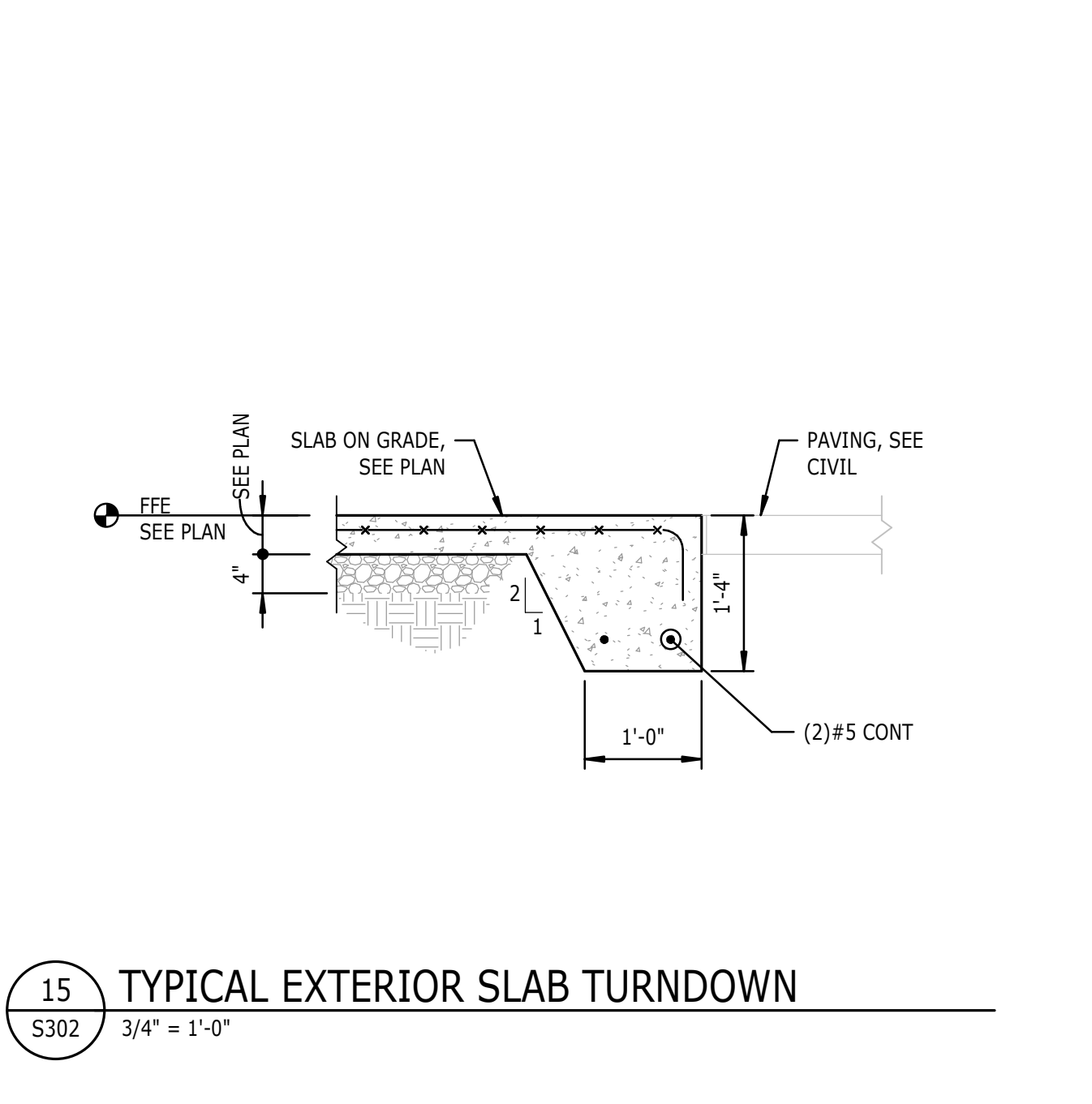
6 TYPICAL AT FOOTING INTERSECTION
S302 3/4" = 1'-0"



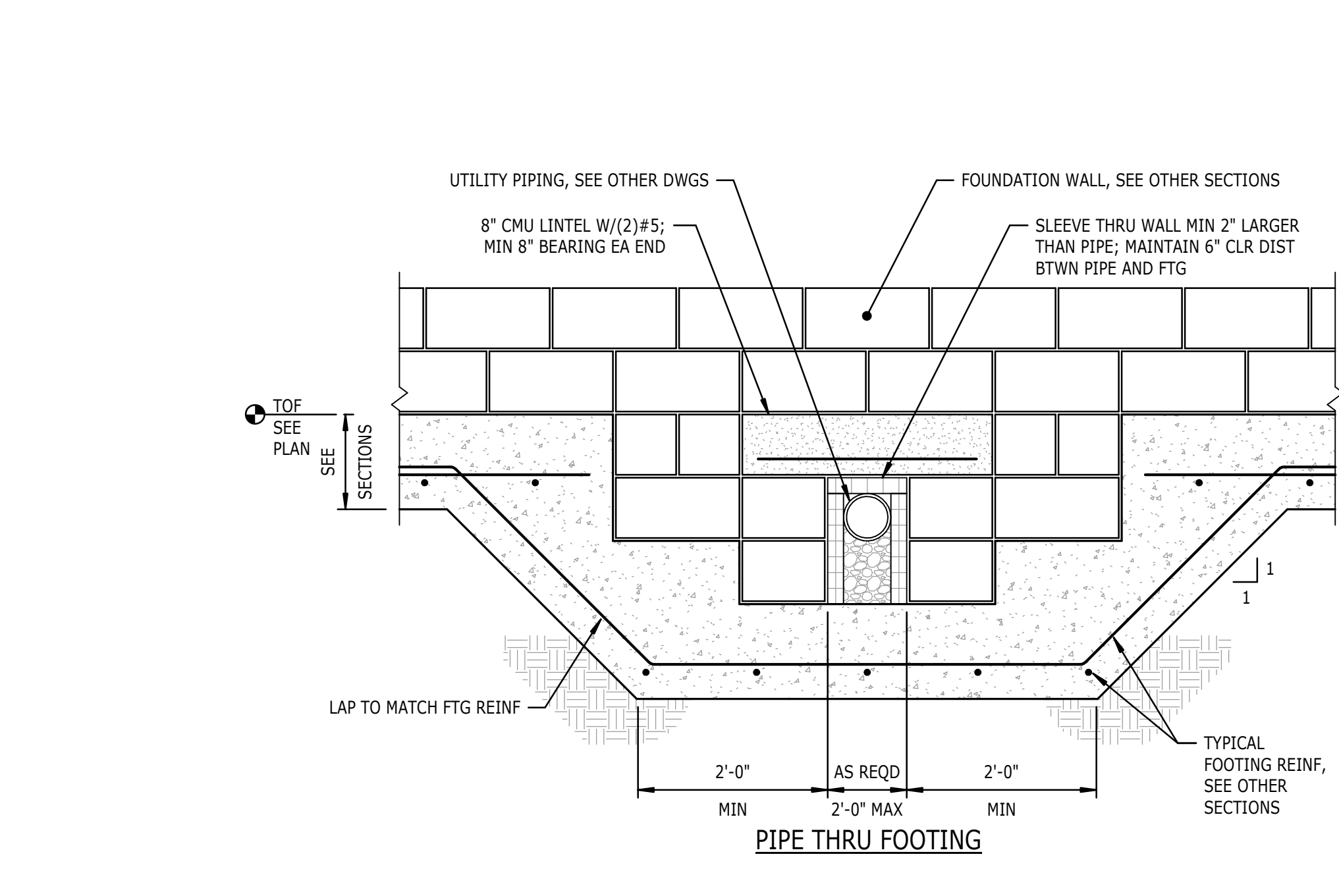
2 TYPICAL FOOTING AT STEEL COLUMN
S302 3/4" = 1'-0"



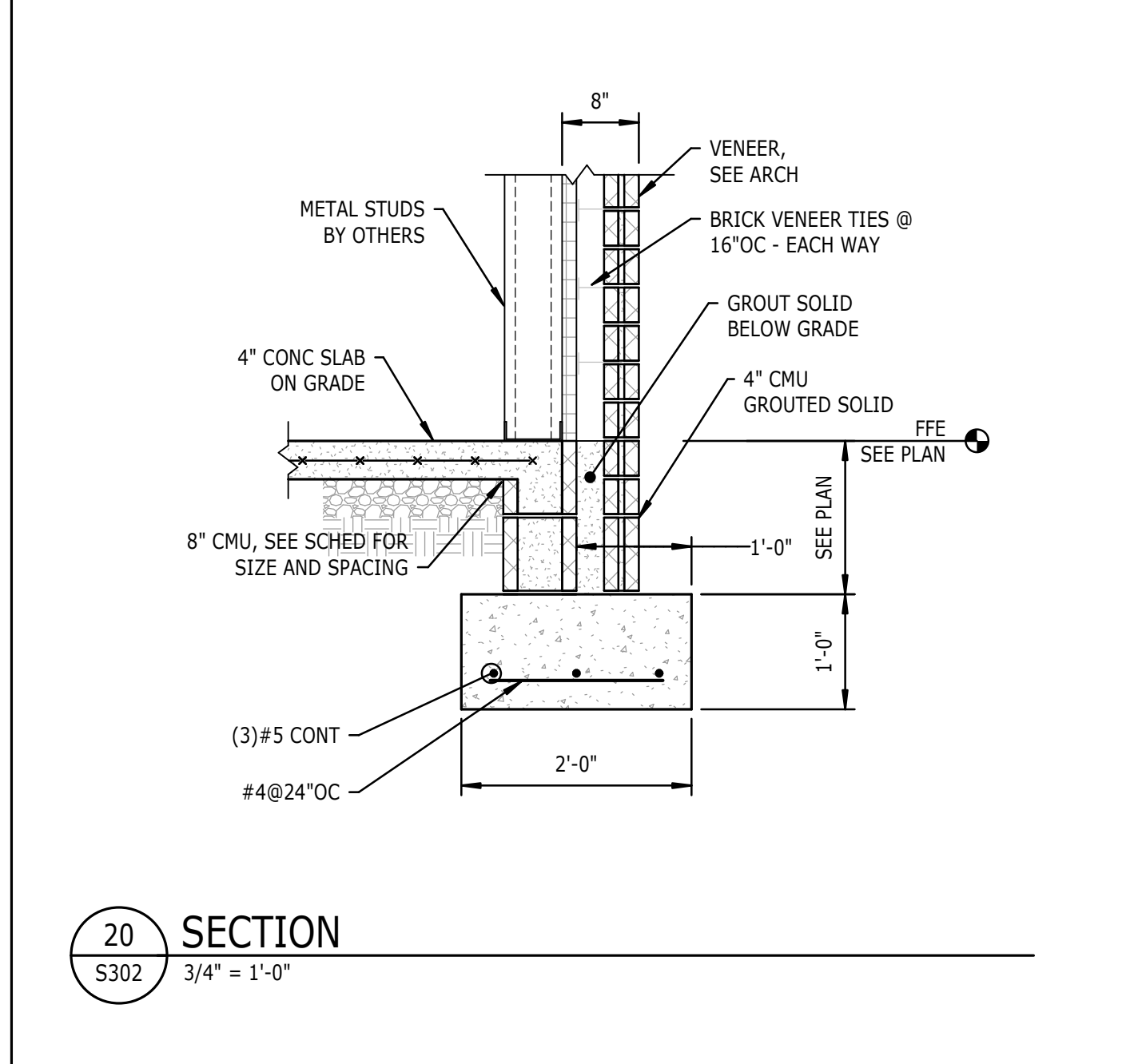
19 SECTION
S302 3/4" = 1'-0"



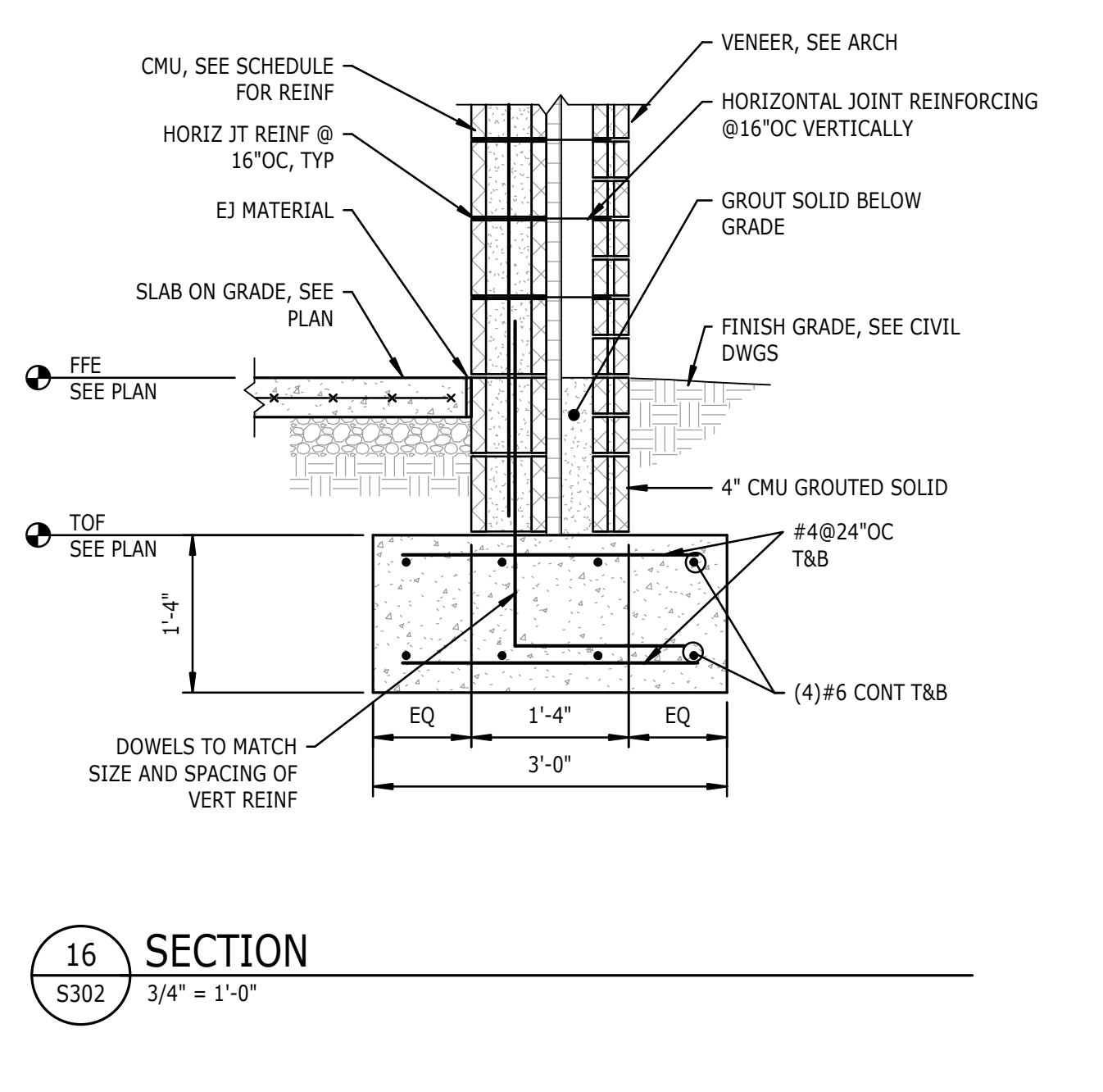
15 TYPICAL EXTERIOR SLAB TURNDOWN
S302 3/4" = 1'-0"



7 TYPICAL UTILITY BELOW FOOTING
S302 3/4" = 1'-0"



20 SECTION
S302 3/4" = 1'-0"



16 SECTION
S302 3/4" = 1'-0"

